



My Ark
ENCOUNTER



*Williamstown, Kentucky
2018*

The Impressive Size of the Ark

Floating & Stability



20.4-inch cubit

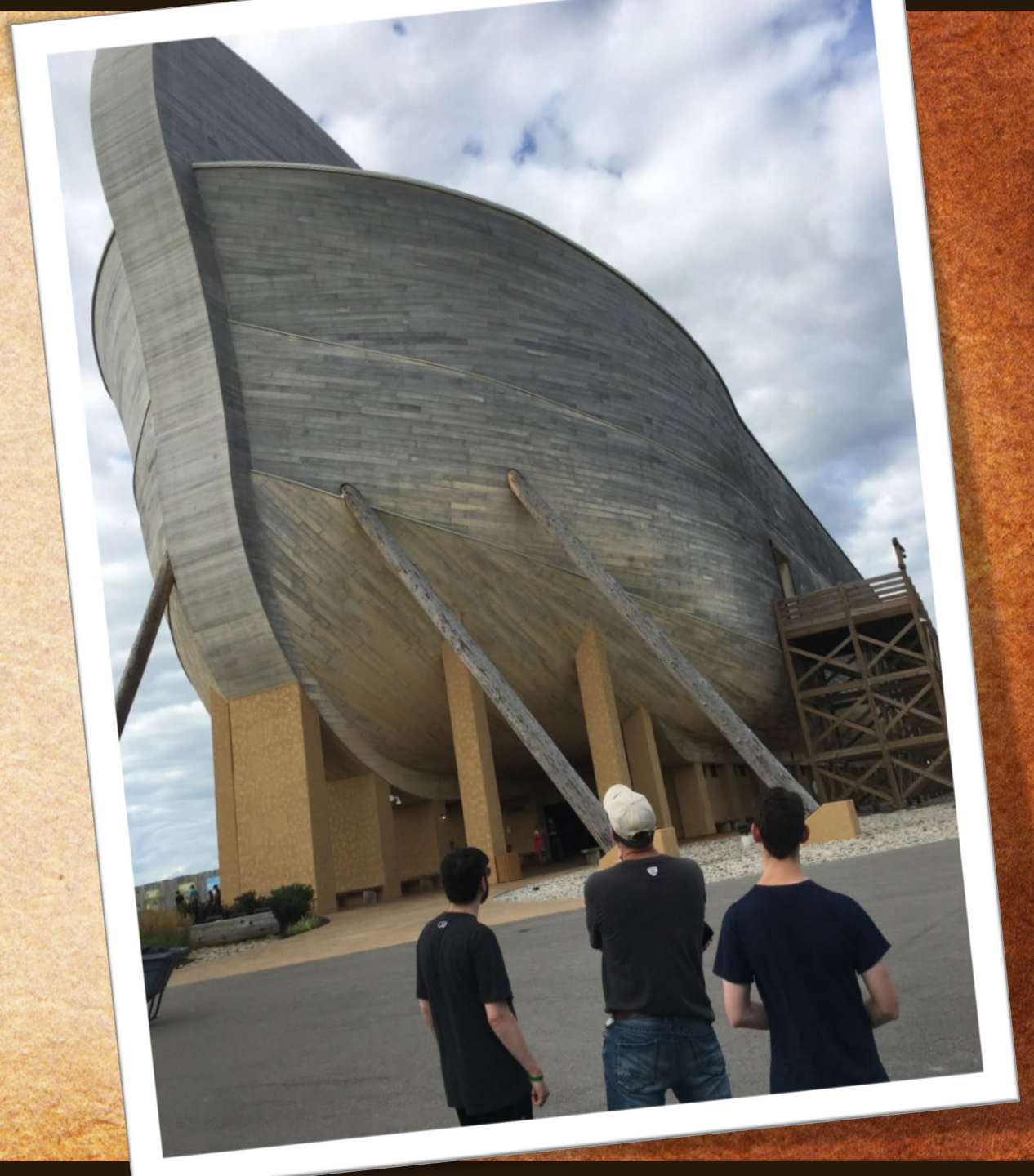
- ✓ Length = 510 feet
- ✓ width = 85 feet
- ✓ Height = 51 feet

Not The Fairy Tale
Ark Depiction!

The Real Size of the Ark



The Real
Size of the
Ark



The Real Size of the Ark



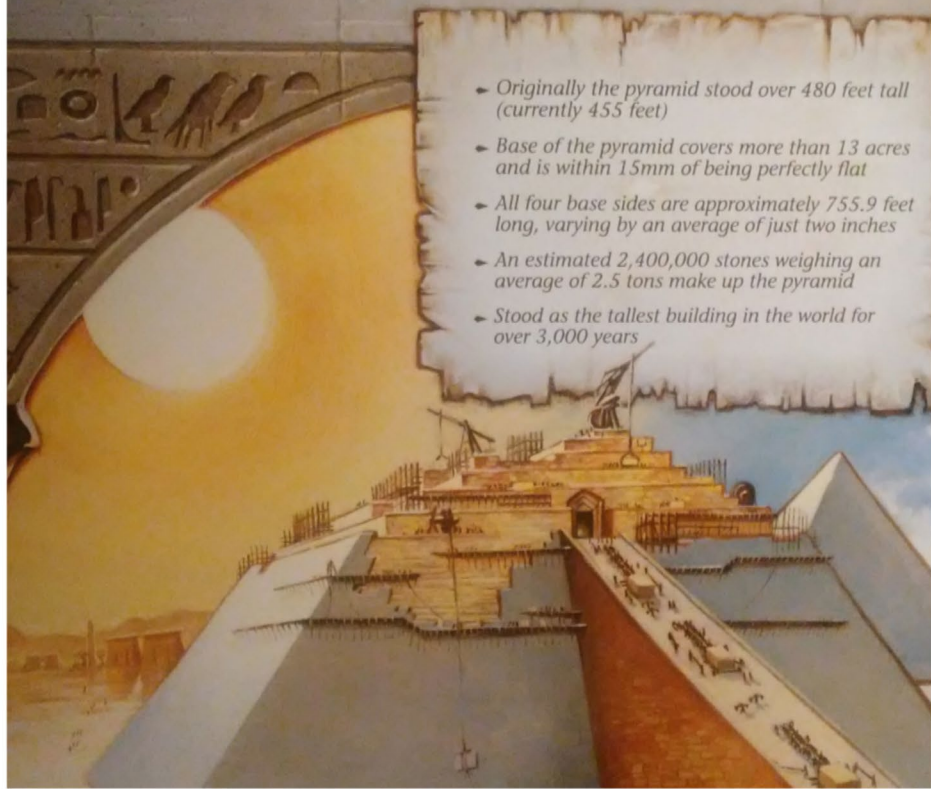
The Real Size of the Ark



THE GREAT PYRAMID

MONUMENTAL ACHIEVEMENT

The only remaining building of the Seven Wonders of the Ancient World, the Great Pyramid of Giza is a massive engineering marvel. Built the first few centuries after Babel, the precision in design as well as the sheer size of the pyramid have baffled researchers as they try to figure out how it was constructed.

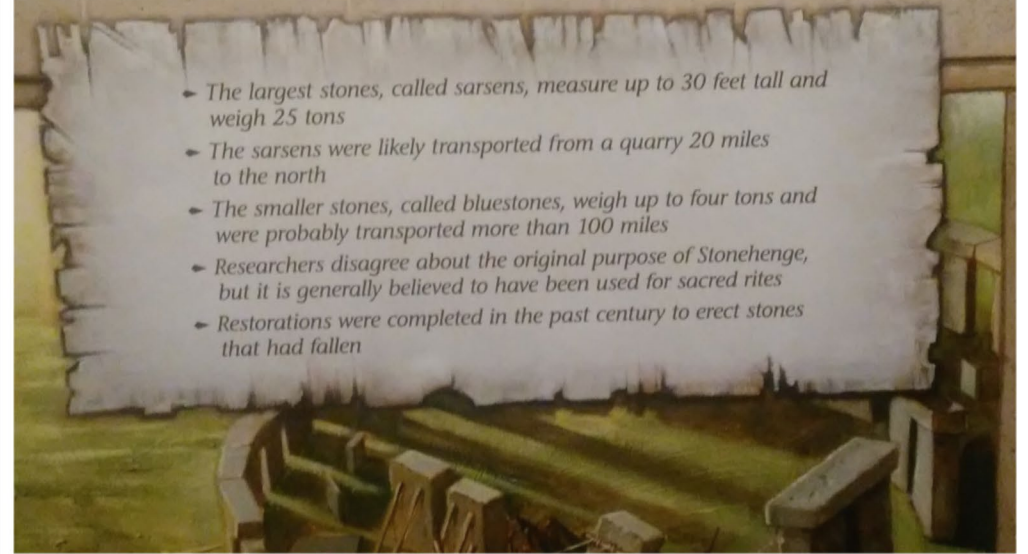


- Originally the pyramid stood over 480 feet tall (currently 455 feet)
- Base of the pyramid covers more than 13 acres and is within 15mm of being perfectly flat
- All four base sides are approximately 755.9 feet long, varying by an average of just two inches
- An estimated 2,400,000 stones weighing an average of 2.5 tons make up the pyramid
- Stood as the tallest building in the world for over 3,000 years

THE ENIGMATIC STONEHENGE

MOVING MEGALITHS

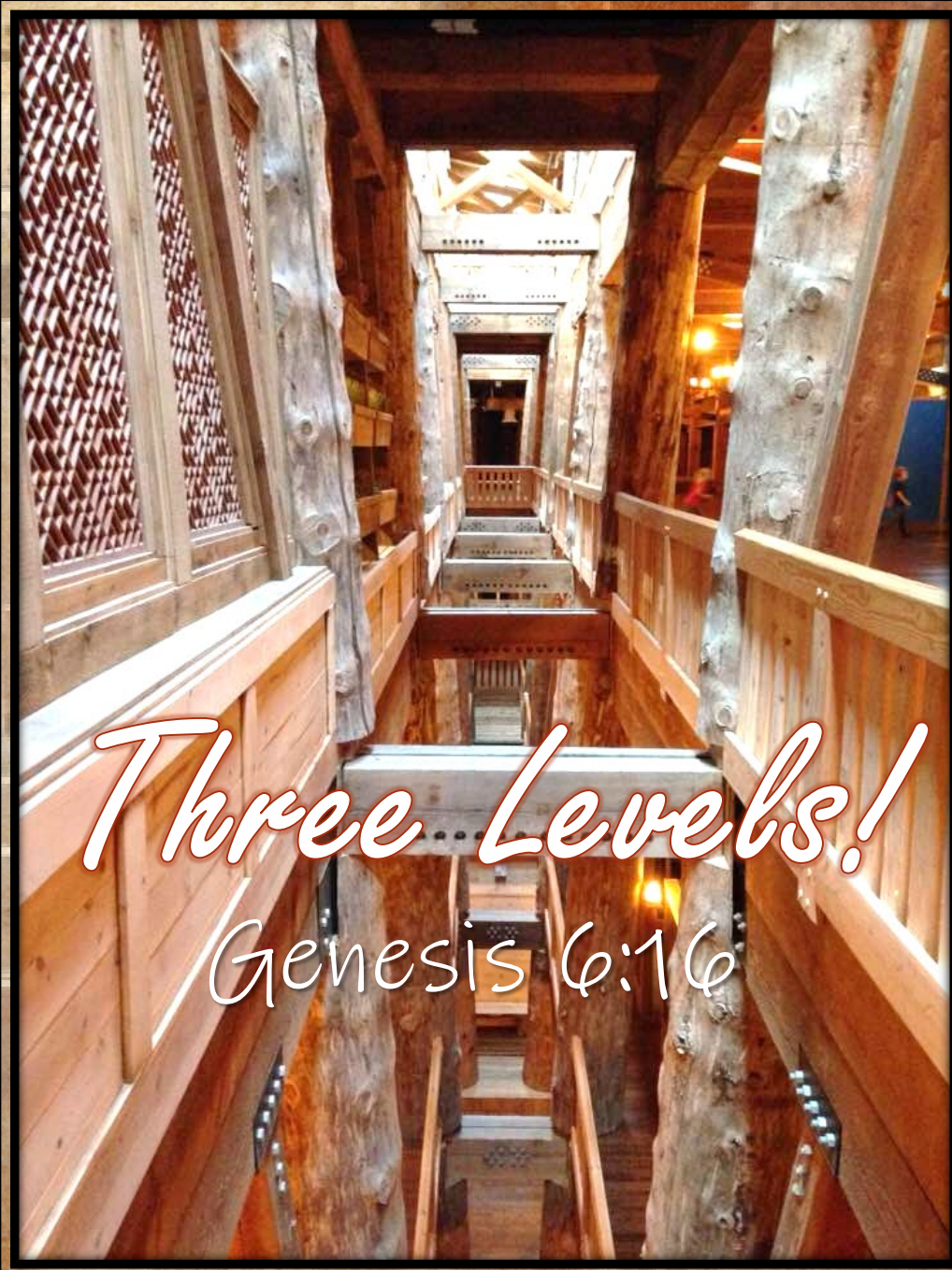
One of the most recognizable landmarks in the world, Stonehenge is another engineering marvel constructed without the use of modern technology. Early settlers of England moved these huge rocks, called megaliths, into place and arranged the stones to align with the sunrise on the summer solstice and sunset of the winter solstice.



- The largest stones, called sarsens, measure up to 30 feet tall and weigh 25 tons
- The sarsens were likely transported from a quarry 20 miles to the north
- The smaller stones, called bluestones, weigh up to four tons and were probably transported more than 100 miles
- Researchers disagree about the original purpose of Stonehenge, but it is generally believed to have been used for sacred rites
- Restorations were completed in the past century to erect stones that had fallen



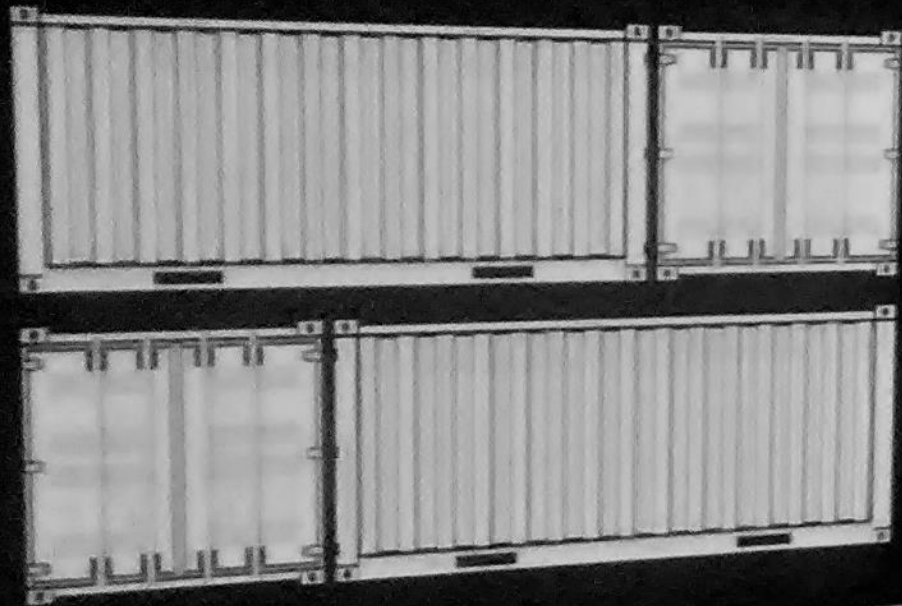
Inside
"Make Rooms" (Gen. 6:14)



Three Levels!

Genesis 6:16

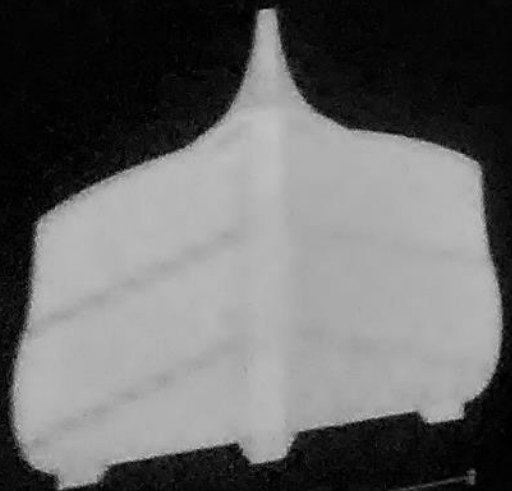
TRACTOR-TRAILERS COULD FIT IN
THE ARK [53 FT X 8.5 FT X 9.3FT]



883 FT TITANIC



510 FT ARK [300 CUBITS]



51 ft
[30 CUBITS]

1 CUBIT
= 1.75 IN

1
DOOR

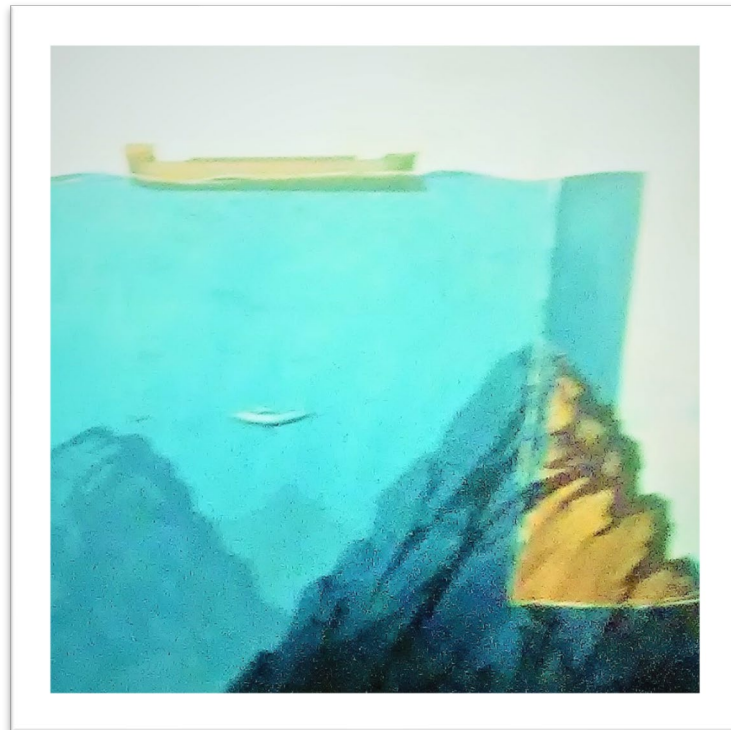


306 FT STATUE OF LIBERTY



250 FT BOEING 874T

The DANGER of
MINIMALIZING MAJOR
BIBLICAL EVENTS & ENTITIES






Why Everything **FITS**
IN THE ARK

SIZE
WHAT WAS NOT TAKEN

21 And all flesh died that moved on the earth: birds and cattle and beasts and every creeping thing that creeps on the earth, and every man.

22 All in whose nostrils was the breath of the spirit of life, all that was on the dry land, died.



Genesis 7:21, 22



Why Everything **FITS**
IN THE ARK

SIZE
WHAT WAS NOT TAKEN
“KIND” NOT “SPECIES”

Kinds ≠ Species

Genesis 6:20,

"Of the birds after their **kind**, of animals after their **kind**, and of every creeping thing of the earth after its **kind**, two of every **kind** will come to you to keep them alive."

Genesis 7:3,

"also seven each of birds of the air, male and female, to keep the **species** alive on the face of all the earth" (NKJV)

*species = seed (KJV; YLT)

HOW DID POLAR BEARS KEEP COOL IN THE ARK?

Skeptics often mock the concept of the Ark and its animals, so they develop questions designed to make the Ark look foolish. However, when one thinks about the Ark from a biblical perspective, the skeptics' questions end up looking foolish.

One of these questions has to do with polar bears—how did Noah keep them cool on the Ark? There are two major problems with this question. First, polar bears do not need to live in a cold climate. Their special adaptations are well suited for an icy climate, but many warm-weather zoos house polar bears. So even if polar bears were on the Ark, there would not have been a need to keep them cool.

Second, this question assumes that polar bears were on the Ark, but they were not. Polar bears are members of the bear kind (family Ursidae). We know that polar bears can produce offspring with grizzlies and other brown bears, and brown bears can interbreed with black bears. Thus, the various bears of the world belong to the same kind. The two bears on the Ark were the ancestors of the many bears in the world today, including polar bears.

*1,398 Animal Kinds
(85 Kinds of Dinosaurs)
6,744 Animals*





Why Everything **FITS**
IN THE ARK

JUVINILE SPECIMENS

EVERY THING FITS

Current estimates from Ark Encounter researchers place 1,398 animal kinds on board the Ark.

Each of these animal kinds and their basic needs—such as food, water, and waste disposal—has been accounted for in the layout of the Ark.



447 ANIMALS (MAJORS) COULD FIT IN THE ARK (50 FT X 300 FT X 150 FT)



Everything Fits!

- ✓ Juveniles would have been taken
 - ✓ Less space, eat less, durable, easier to manage, etc.
- ✓ 85% of the animals on the ark are estimated to have been less than 22 lbs.
- ✓ 8% have been estimated to be over 220 lbs.
- ✓ Animals, storage, food, water, and waste disposal were accounted for in the ark

Hebrews 11:1

Living Oracles

"Now, **faith** is the confidence of things hoped for, and the conviction of things not seen."

Hebrews 11:6, 7

FAITH is minimized by atheists and denominational preachers alike!

Faith is falsely defined and not applied!

Faith & Baptism

Noah's Faith

Warned → Moved In Fear & Prepared An Ark

Heb. 11:7

The Saved Sinner

Warned → Moves In Fear & Obeys in Baptism

Mk. 16:15

Col. 1:28

Acts 2:36

Acts 8:35

Mk. 16:16 | Acts 2:37-41 | Acts 8:36, 37